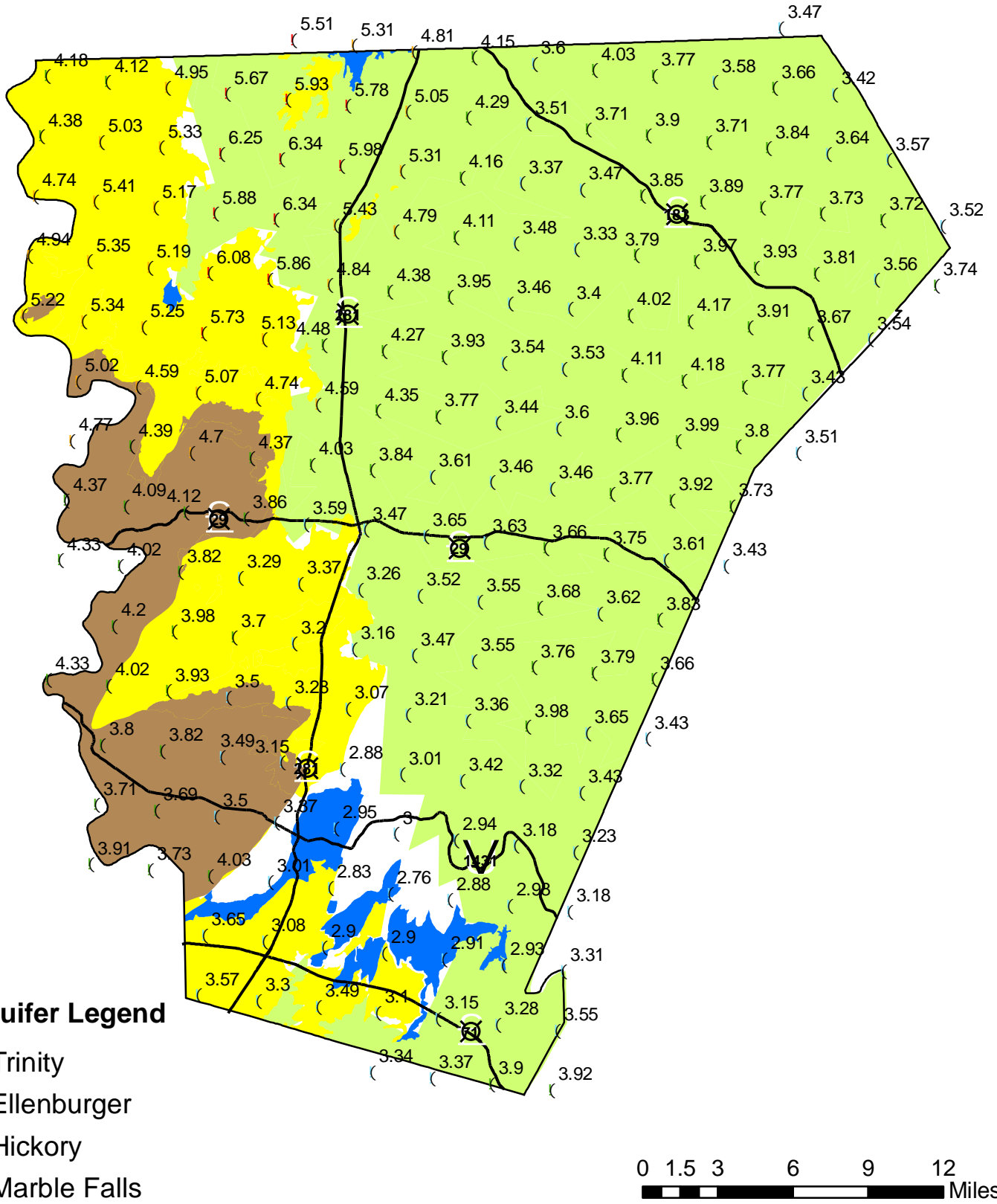


Rainfall Totals for January 2010



Central Texas Groundwater Conservation District
 P.O. Box 870, 225 S. Pierce, Suite 104
 Burnet, TX 78611



Data Source:
 National Weather Service
 Precipitation Analysis

Rainfall in Inches

- (2.76 - 3.65
- (3.66 - 4.55
- (4.56 - 5.45
- (5.46 - 6.34