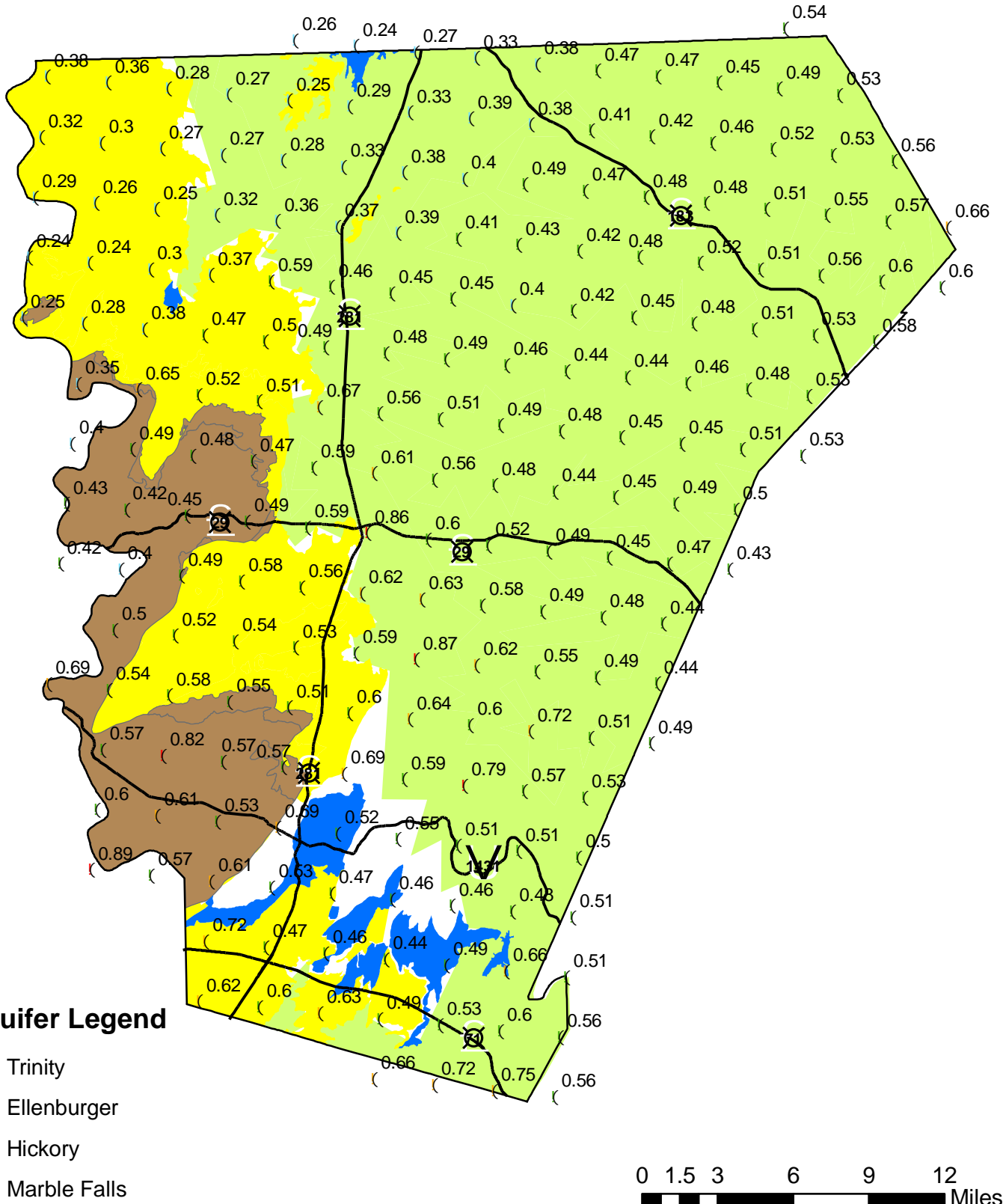


Rainfall Totals for January 2009



Central Texas Groundwater Conservation District
 P.O. Box 870, 225 S. Pierce, Suite 104
 Burnet, TX 78611



Data Source:
 National Weather Service
 Precipitation Analysis

Rainfall in Inches

(0.24 - 0.40	(0.61 - 0.75
(0.41 - 0.60	(0.76 - 0.89