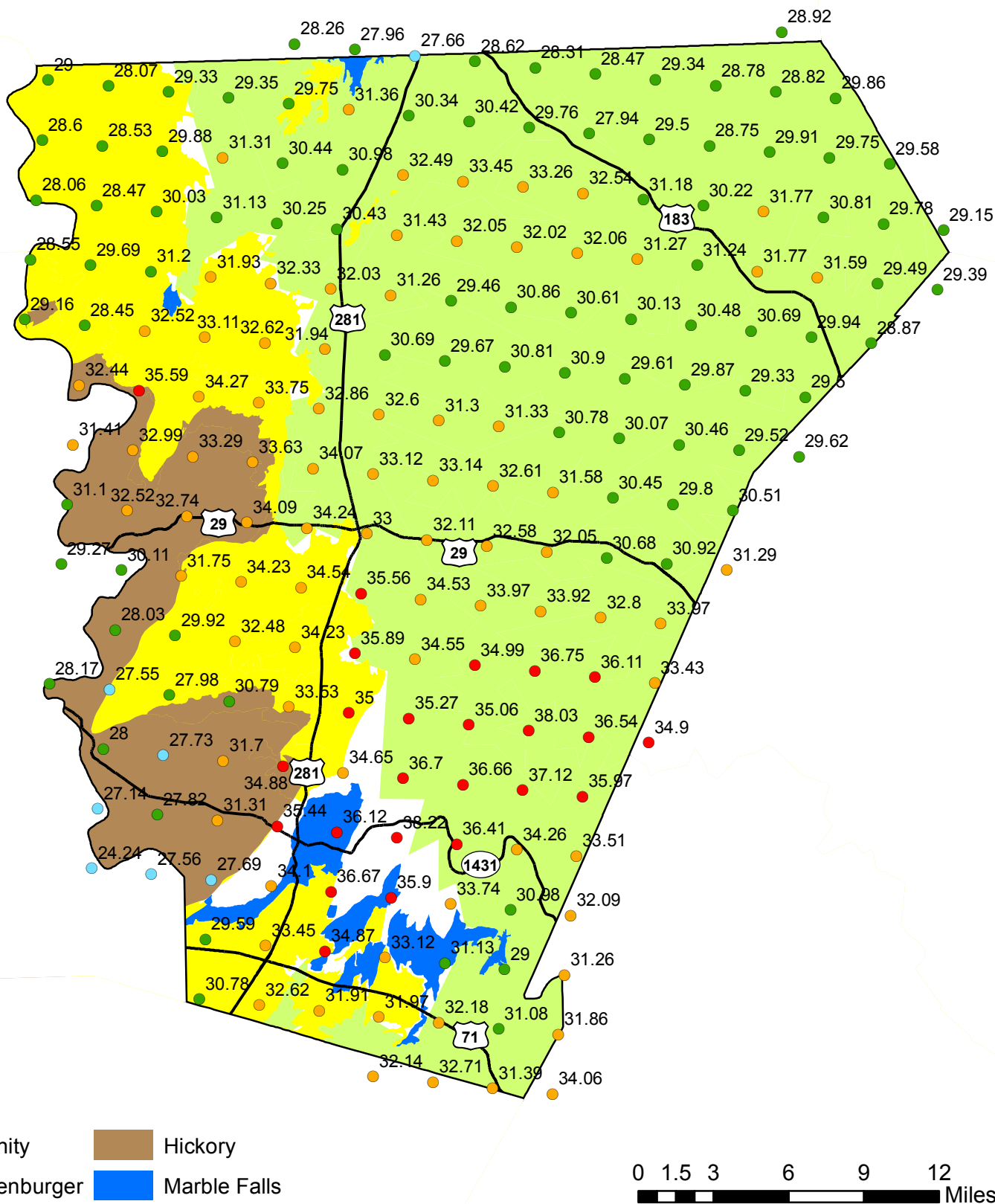
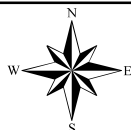


# Rainfall Totals for January through November 2013



Central Texas Groundwater Conservation District  
P.O. Box 870, 225 S. Pierce, Suite 104  
Burnet, TX 78611



Data Source:  
National Weather Service  
Precipitation Analysis

## Rainfall in Inches

24.24 - 27.75	31.26 - 34.75
27.76 - 31.25	34.76 - 38.22