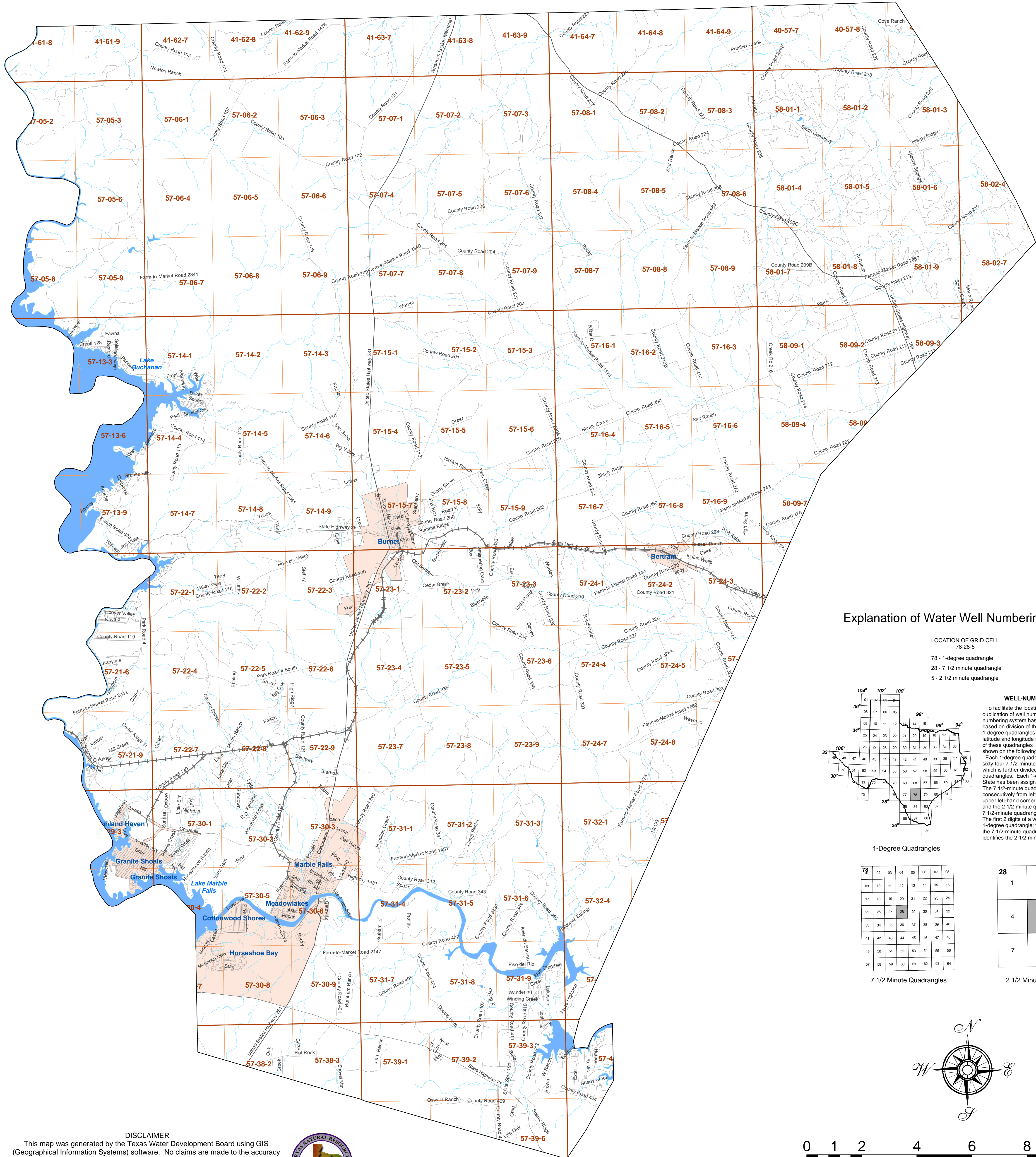
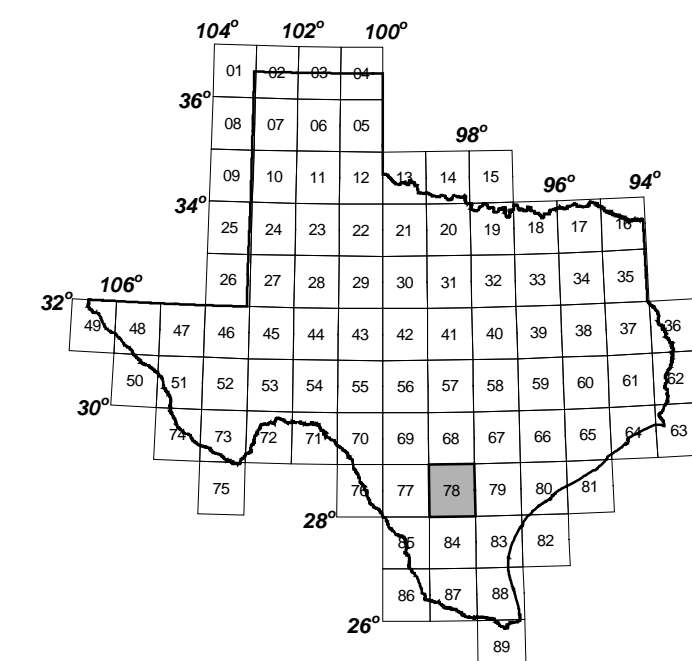


BURNET COUNTY WITH WATER WELL NUMBERING GRID



Explanation of Water Well Numbering System

- LOCATION OF GRID CELL
 78-28-5
 78 - 1-degree quadrangle
 28 - 7 1/2 minute quadrangle
 5 - 2 1/2 minute quadrangle



WELL-NUMBERING SYSTEM
 To facilitate the location of wells and avoid duplication of well numbers, a statewide well-numbering system has been adopted. It is based on division of the State into a grid of 1-degree quadrangles formed by degrees of latitude and longitude and the repeated division of these quadrangles into smaller ones as shown on the following diagram.
 Each 1-degree quadrangle is divided into sixty-four 7 1/2-minute quadrangles, each of which is further divided into nine 2 1/2-minute quadrangles. Each 1-degree quadrangle in the State has been assigned an identification number. The 7 1/2-minute quadrangles are numbered consecutively from left to right, beginning in the upper left-hand corner of the 1-degree quadrangle and the 2 1/2-minute quadrangles within each 7 1/2-minute quadrangle are similarly numbered. The first 2 digits of a well number identify the 1-degree quadrangle; the third and fourth digits, the 7 1/2-minute quadrangle; and the fifth digit identifies the 2 1/2-minute quadrangle.

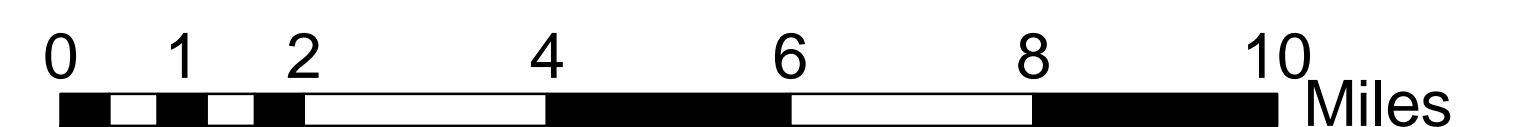
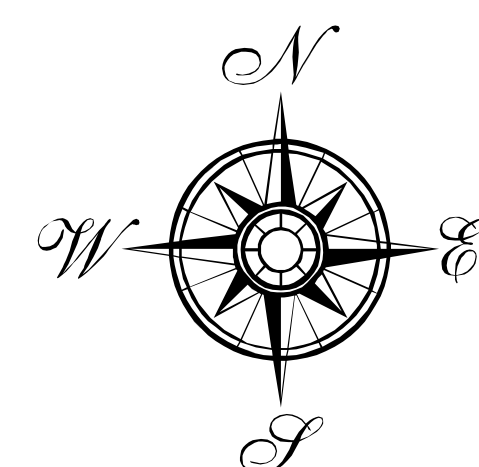
1-Degree Quadrangles

78	02	03	04	05	06	07	08
09	10	11	12	13	14	15	16
17	18	19	20	21	22	23	24
25	26	27	28	29	30	31	32
33	34	35	36	37	38	39	40
41	42	43	44	45	46	47	48
49	50	51	52	53	54	55	56
57	58	59	60	61	62	63	64

7 1/2 Minute Quadrangles

28		
1	2	3
4	5	6
7	8	9

2 1/2 Minute Quadrangles



*All mapped data (except grid) is from TIGER 2000 Census data.
 Map created by Mark Hayes, May 3, 2004
 TWDB - GIS section



DISCLAIMER
 This map was generated by the Texas Water Development Board using GIS (Geographical Information Systems) software. No claims are made to the accuracy or completeness of the information shown herein nor to its suitability for a particular use. The scale and location of all mapped data are approximate. Reproduction is not permitted without prior written permission from the Texas Natural Resources Information Systems. To order more copies of this map, contact: TNRIS, 1700 N. Congress Av., Austin, TX 78711-3231. Phone: (512)-461-8337.

