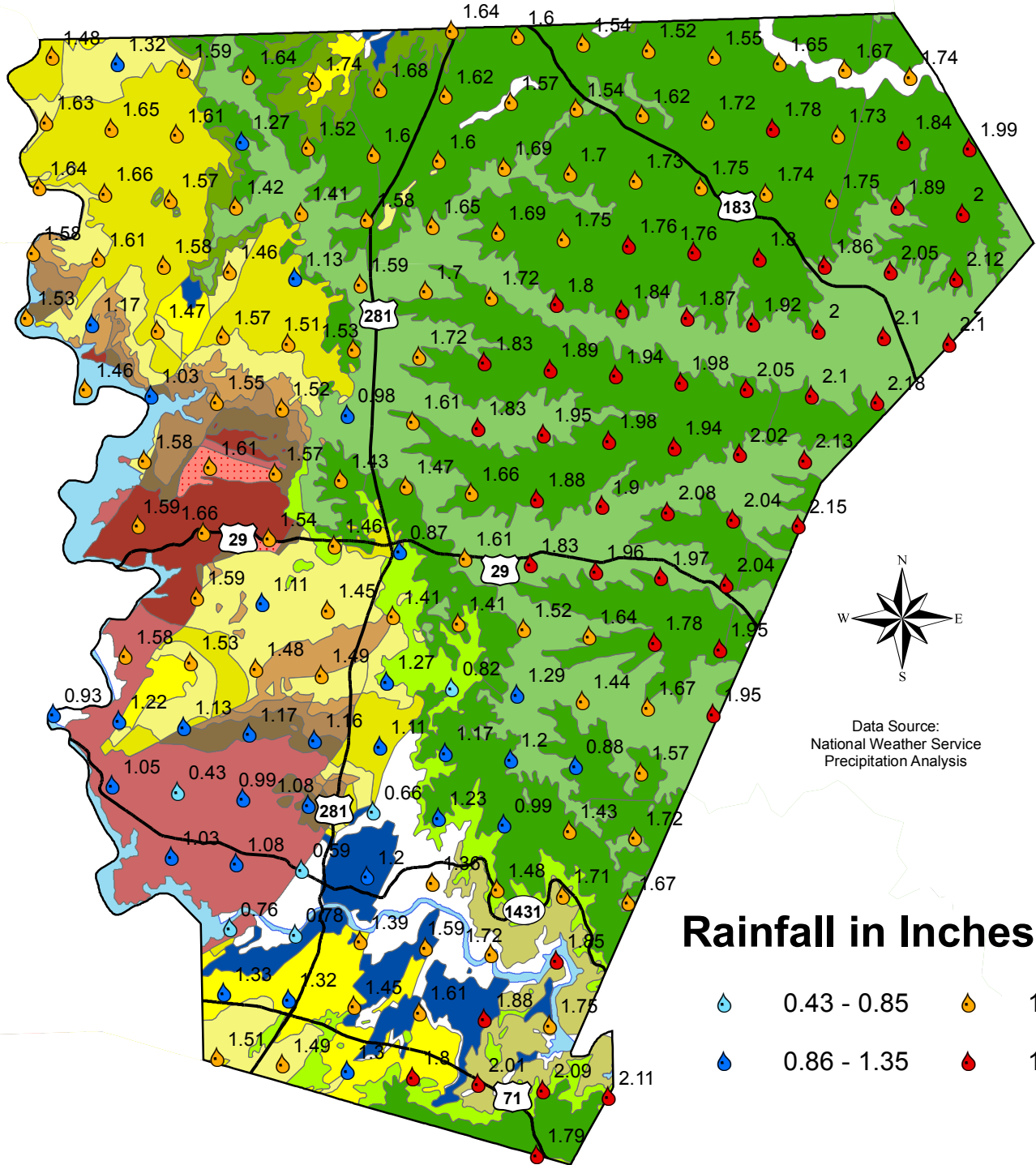


Burnet County Rainfall Totals January through March 2014



Data Source:
National Weather Service
Precipitation Analysis

Rainfall in Inches

- 💧 0.43 - 0.85
- 💧 0.86 - 1.35
- 💧 1.36 - 1.75
- 💧 1.76 - 2.18

- | | | |
|--|--|--|
| <p>Trinity Aquifer</p> <ul style="list-style-type: none"> Kwa, Walnut Clay Kgr, Glen Rose Limestone Kpgr, Paluxy Sand and Glen Rose Limestone, undivided Kh, Hensell Sand Ktp, Travis Peak Formation Kcs, Cow Creek Ls., Hammett Shale, and Sycamore Sand, undivided <p>Marble Falls Aquifer</p> <ul style="list-style-type: none"> IPmf, Marble Falls Limestone | <p>Ellenburger-San Saba Aquifer</p> <ul style="list-style-type: none"> Og, Gorman Formation Oh, Honeycut Formation Ot, Tanyard Formation Cs, San Saba Member <p>Hickory Aquifer</p> <ul style="list-style-type: none"> Ch, Hickory Sandstone Member Clc, Riley Formation, undivided Cpw, Point Peak, Morgan Creek Ls., and Welge Ss. Mbs | <p>Granite & Granite Gravel Formations</p> <ul style="list-style-type: none"> pCm, Mafic igneous rocks pCp, Packsaddle Schist pCt, Town Mountain Granite pCv, Valley Spring Gneiss pCy, Younger granitic intrusion <p>Surface Water</p> <ul style="list-style-type: none"> Water |
|--|--|--|