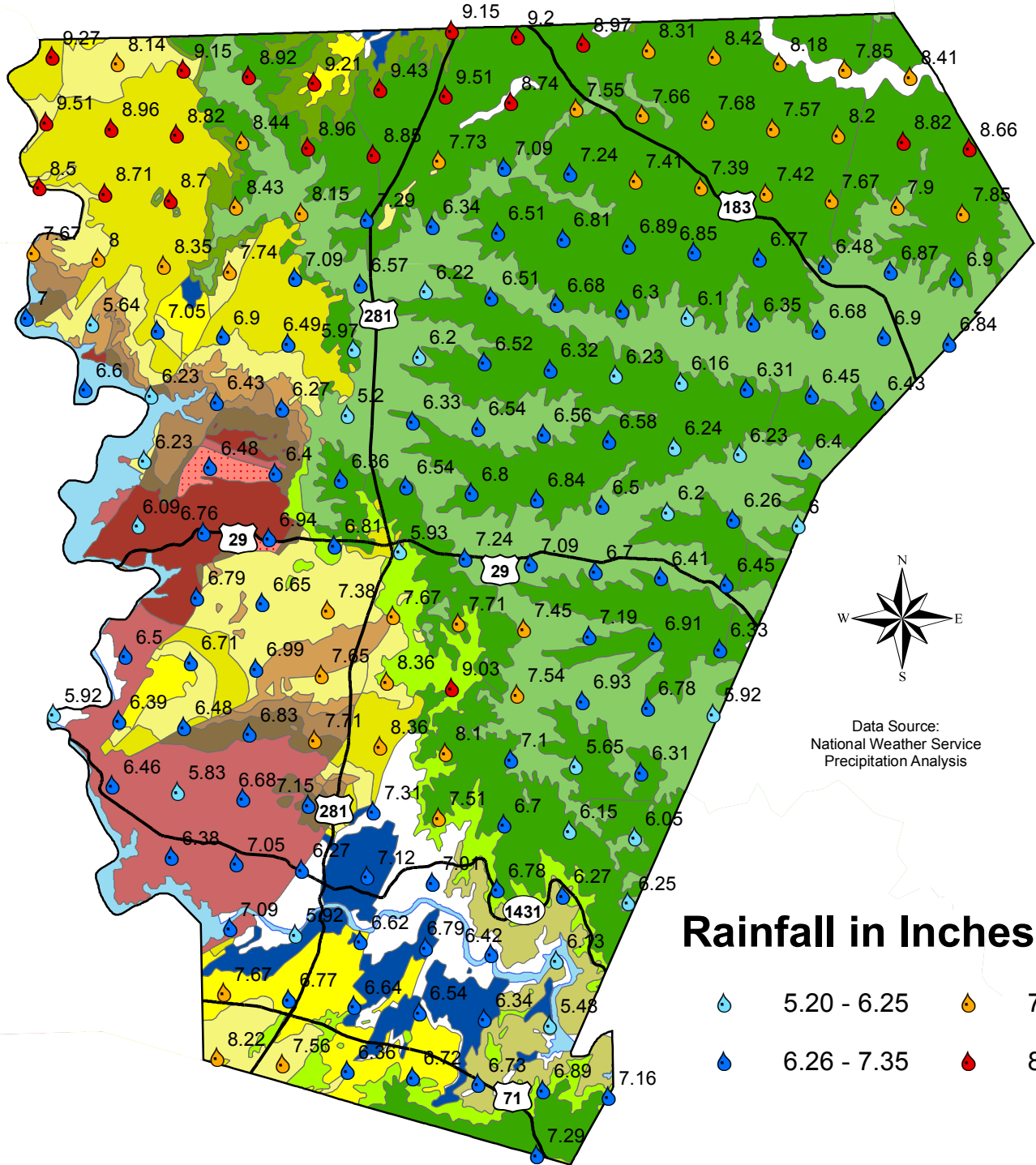
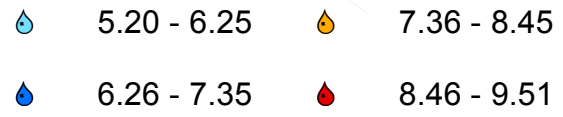


# Burnet County Rainfall Totals May 2014



Data Source:  
National Weather Service  
Precipitation Analysis

## Rainfall in Inches



- |  |  |  |
|--|--|--|
| <p><b>Trinity Aquifer</b></p> <ul style="list-style-type: none"> <li> Kwa, Walnut Clay</li> <li> Kgr, Glen Rose Limestone</li> <li> Kpgr, Paluxy Sand and Glen Rose Limestone, undivided</li> <li> Kh, Hensell Sand</li> <li> Ktp, Travis Peak Formation</li> <li> Kcs, Cow Creek Ls., Hammett Shale, and Sycamore Sand, undivided</li> </ul> <p><b>Marble Falls Aquifer</b></p> <ul style="list-style-type: none"> <li> IPmf, Marble Falls Limestone</li> </ul> | <p><b>Ellenburger-San Saba Aquifer</b></p> <ul style="list-style-type: none"> <li> Og, Gorman Formation</li> <li> Oh, Honeycut Formation</li> <li> Ot, Tanyard Formation</li> <li> Cs, San Saba Member</li> </ul> <p><b>Hickory Aquifer</b></p> <ul style="list-style-type: none"> <li> Ch, Hickory Sandstone Member</li> <li> Clc, Riley Formation, undivided</li> <li> Cpw, Point Peak, Morgan Creek Ls., and Welge Ss. Mbs</li> </ul> | <p><b>Granite &amp; Granite Gravel Formations</b></p> <ul style="list-style-type: none"> <li> pCm, Mafic igneous rocks</li> <li> pCp, Packsaddle Schist</li> <li> pCT, Town Mountain Granite</li> <li> pCv, Valley Spring Gneiss</li> <li> pCy, Younger granitic intrusion</li> </ul> <p><b>Surface Water</b></p> <ul style="list-style-type: none"> <li> Water</li> </ul> |
|--|--|--|