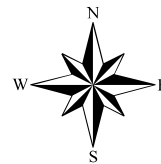
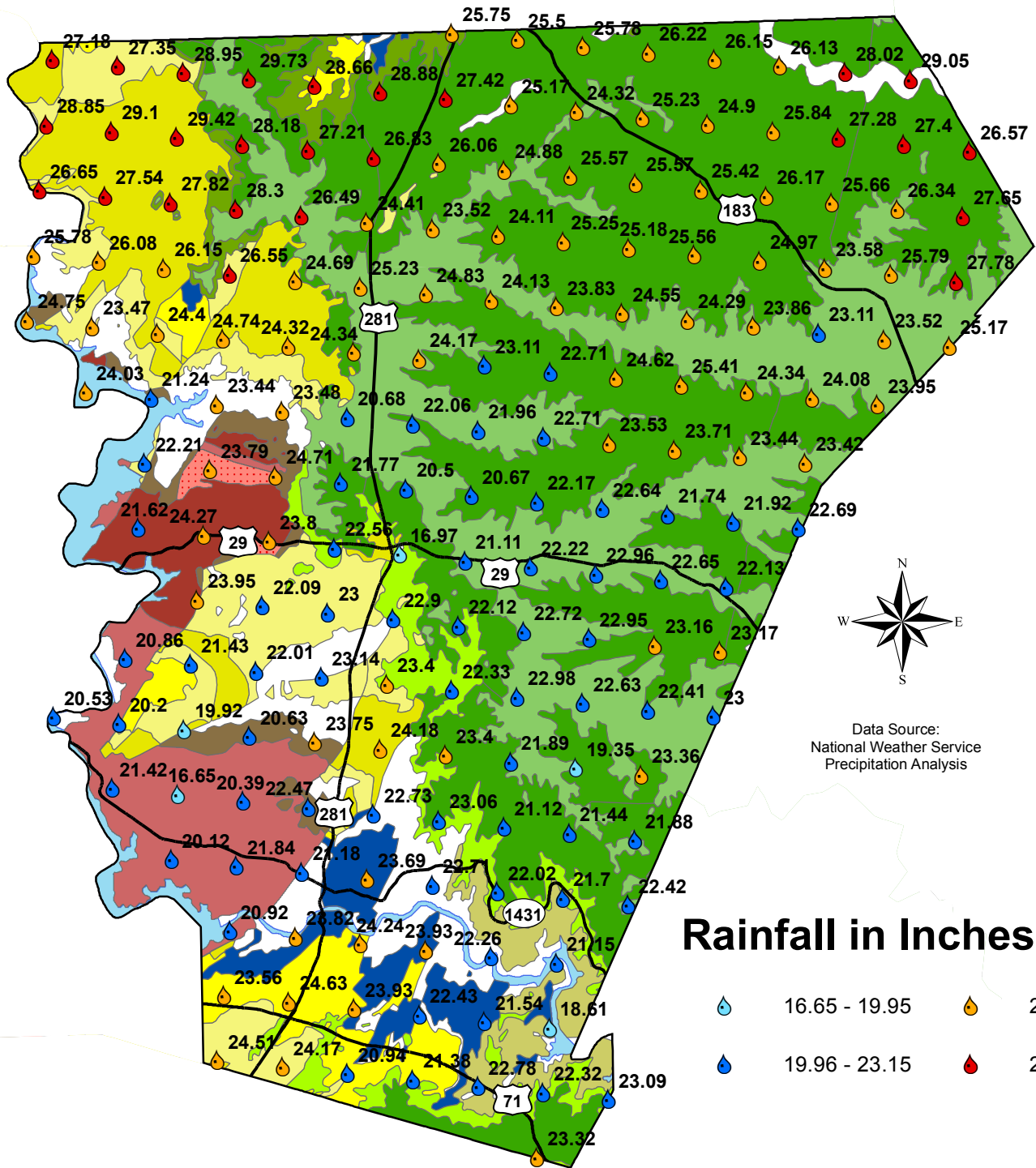




# Burnet County Rainfall Totals January through October 2014



Data Source:  
National Weather Service  
Precipitation Analysis

## Rainfall in Inches

- 16.65 - 19.95
- 23.16 - 26.45
- 19.96 - 23.15
- 26.46 - 29.73

### Trinity Aquifer

- Kwa, Walnut Clay
- Kgr, Glen Rose Limestone
- Kpgr, Paluxy Sand and Glen Rose Limestone, undivided
- Kh, Hensell Sand
- Ktp, Travis Peak Formation
- Kcs, Cow Creek Ls., Hammett Shale, and Sycamore Sand, undivided

### Marble Falls Aquifer

- IPmf, Marble Falls Limestone

### Ellenburger-San Saba Aquifer

- Og, Gorman Formation
- Oh, Honeycut Formation
- Ot, Tanyard Formation
- Cs, San Saba Member

### Hickory Aquifer

- Ch, Hickory Sandstone Member
- Clc, Riley Formation, undivided
- Cpw, Point Peak, Morgan Creek Ls., and Welge Ss. Mbs

### Granite & Granite Gravel Formations

- pCm, Mafic igneous rocks
- pCp, Packsaddle Schist
- pCt, Town Mountain Granite
- pCv, Valley Spring Gneiss
- pCy, Younger granitic intrusion

### Surface Water

- Water