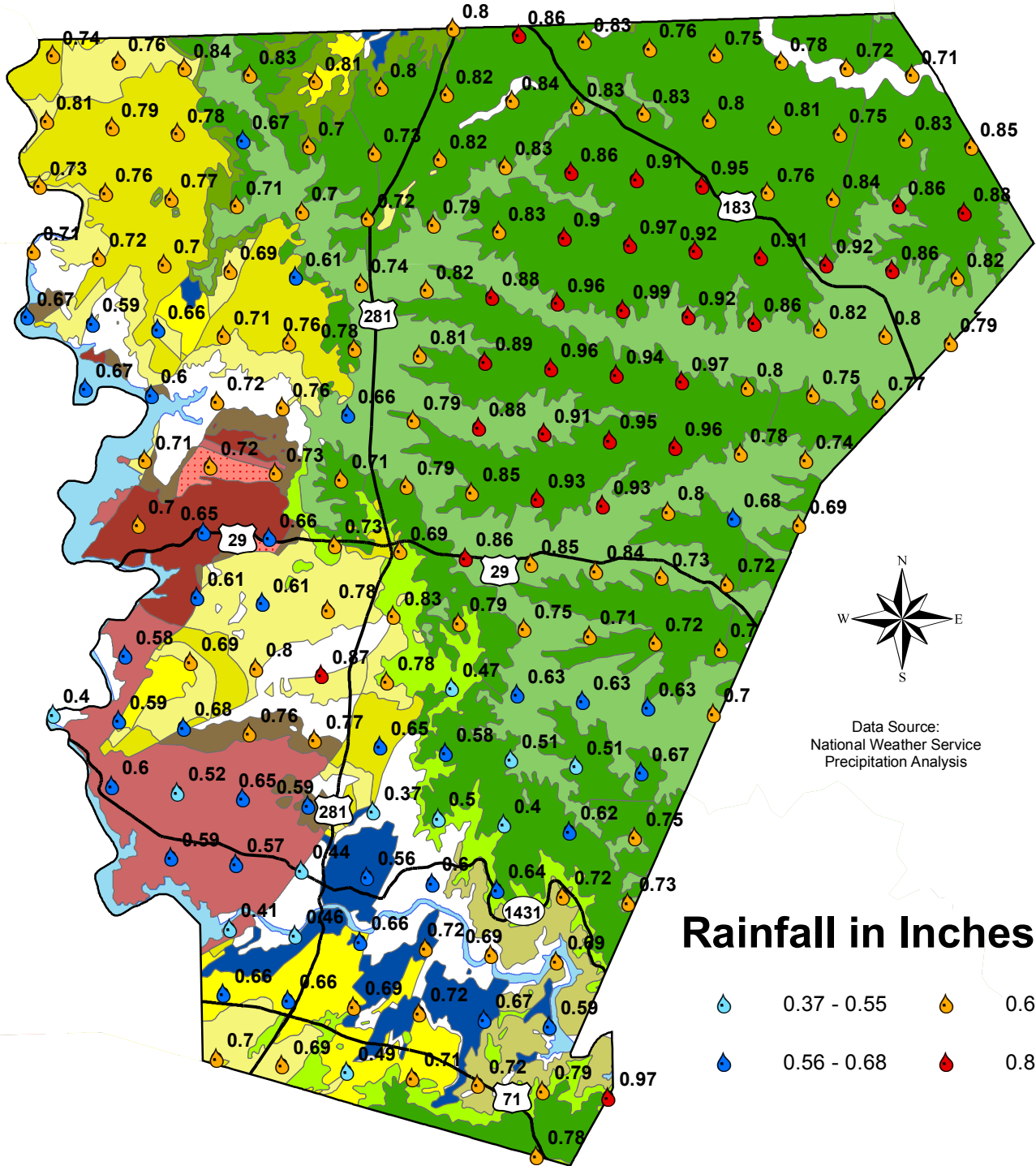




Burnet County Rainfall Totals

□ □ H □ F □ H2014 E □ H □



Data Source:
National Weather Service
Precipitation Analysis

Rainfall in Inches

- 💧 0.37 - 0.55
- 💧 0.56 - 0.68
- 💧 0.69 - 0.85
- 💧 0.86 - 0.99

- | | | |
|--|--|--|
| <p>Trinity Aquifer</p> <ul style="list-style-type: none"> ■ Kwa, Walnut Clay ■ Kgr, Glen Rose Limestone ■ Kpgr, Paluxy Sand and Glen Rose Limestone, undivided ■ Kh, Hensell Sand ■ Ktp, Travis Peak Formation ■ Kcs, Cow Creek Ls., Hammett Shale, and Sycamore Sand, undivided <p>Marble Falls Aquifer</p> <ul style="list-style-type: none"> ■ IPmf, Marble Falls Limestone | <p>Ellenburger-San Saba Aquifer</p> <ul style="list-style-type: none"> ■ Og, Gorman Formation ■ Oh, Honeycut Formation ■ Ot, Tanyard Formation ■ Cs, San Saba Member <p>Hickory Aquifer</p> <ul style="list-style-type: none"> ■ Ch, Hickory Sandstone Member ■ Clc, Riley Formation, undivided ■ Cpw, Point Peak, Morgan Creek Ls., and Welge Ss. Mbs | <p>Granite & Granite Gravel Formations</p> <ul style="list-style-type: none"> ■ pCm, Mafic igneous rocks ■ pCp, Packsaddle Schist ■ pCt, Town Mountain Granite ■ pCv, Valley Spring Gneiss ■ pCy, Younger granitic intrusion <p>Surface Water</p> <ul style="list-style-type: none"> ■ Water |
|--|--|--|