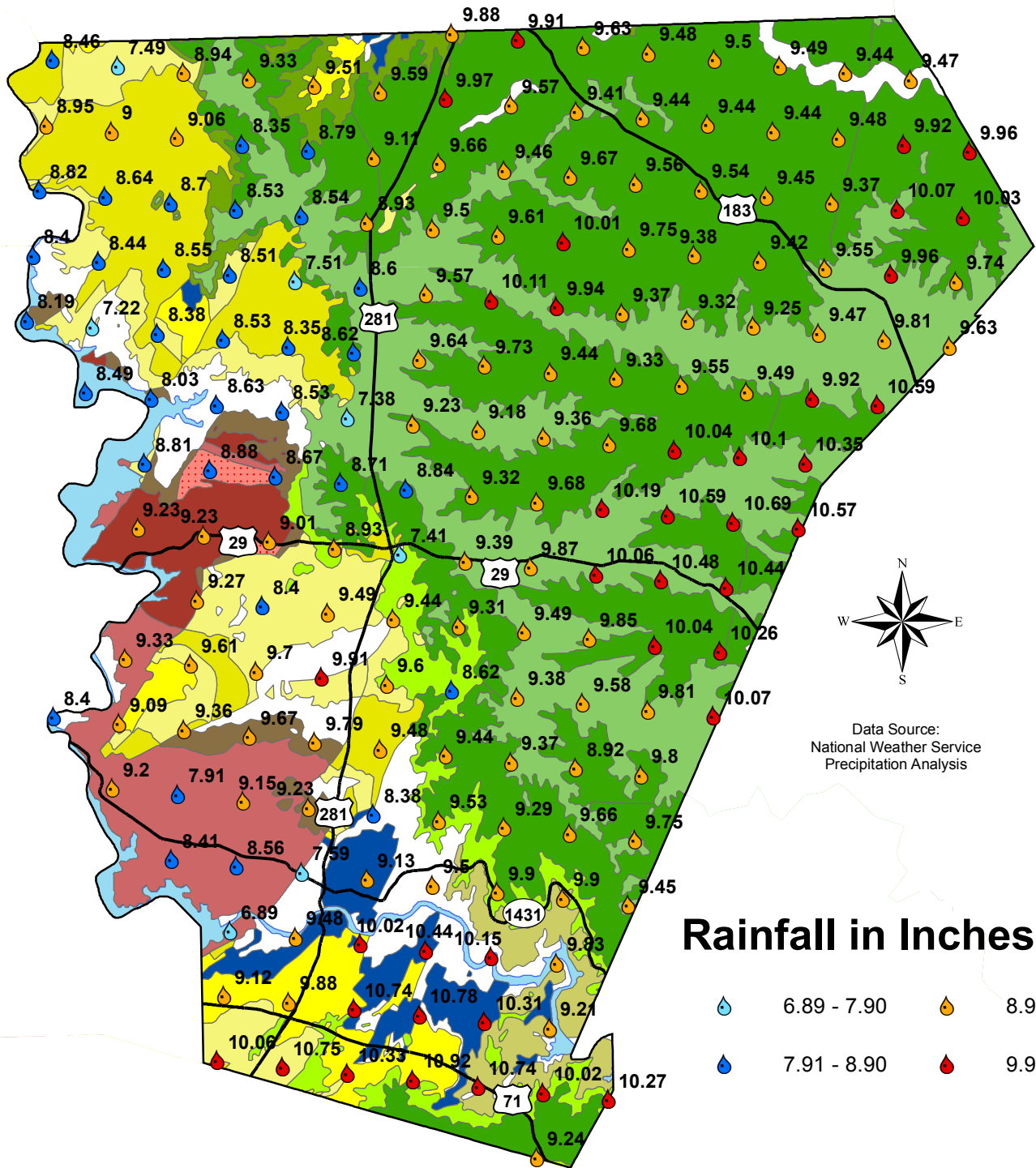




Burnet County Rainfall Totals January through April 2015



Data Source:
National Weather Service
Precipitation Analysis

Rainfall in Inches

- 6.89 - 7.90
- 8.91 - 9.90
- 7.91 - 8.90
- 9.91 - 10.92

Trinity Aquifer

- Kwa, Walnut Clay
- Kgr, Glen Rose Limestone
- Kpgr, Paluxy Sand and Glen Rose Limestone, undivided
- Kh, Hensell Sand
- Ktp, Travis Peak Formation
- Kcs, Cow Creek Ls., Hammett Shale, and Sycamore Sand, undivided

Marble Falls Aquifer

- IPmf, Marble Falls Limestone

Ellenburger-San Saba Aquifer

- Og, Gorman Formation
- Oh, Honeycut Formation
- Ot, Tanyard Formation
- Cs, San Saba Member

Hickory Aquifer

- Ch, Hickory Sandstone Member
- Clc, Riley Formation, undivided
- Cpw, Point Peak, Morgan Creek Ls., and Welge Ss. Mbs

Granite & Granite Gravel Formations

- pCm, Mafic igneous rocks
- pCp, Packsaddle Schist
- pCt, Town Mountain Granite
- pCv, Valley Spring Gneiss
- pCy, Younger granitic intrusion

Surface Water

- Water