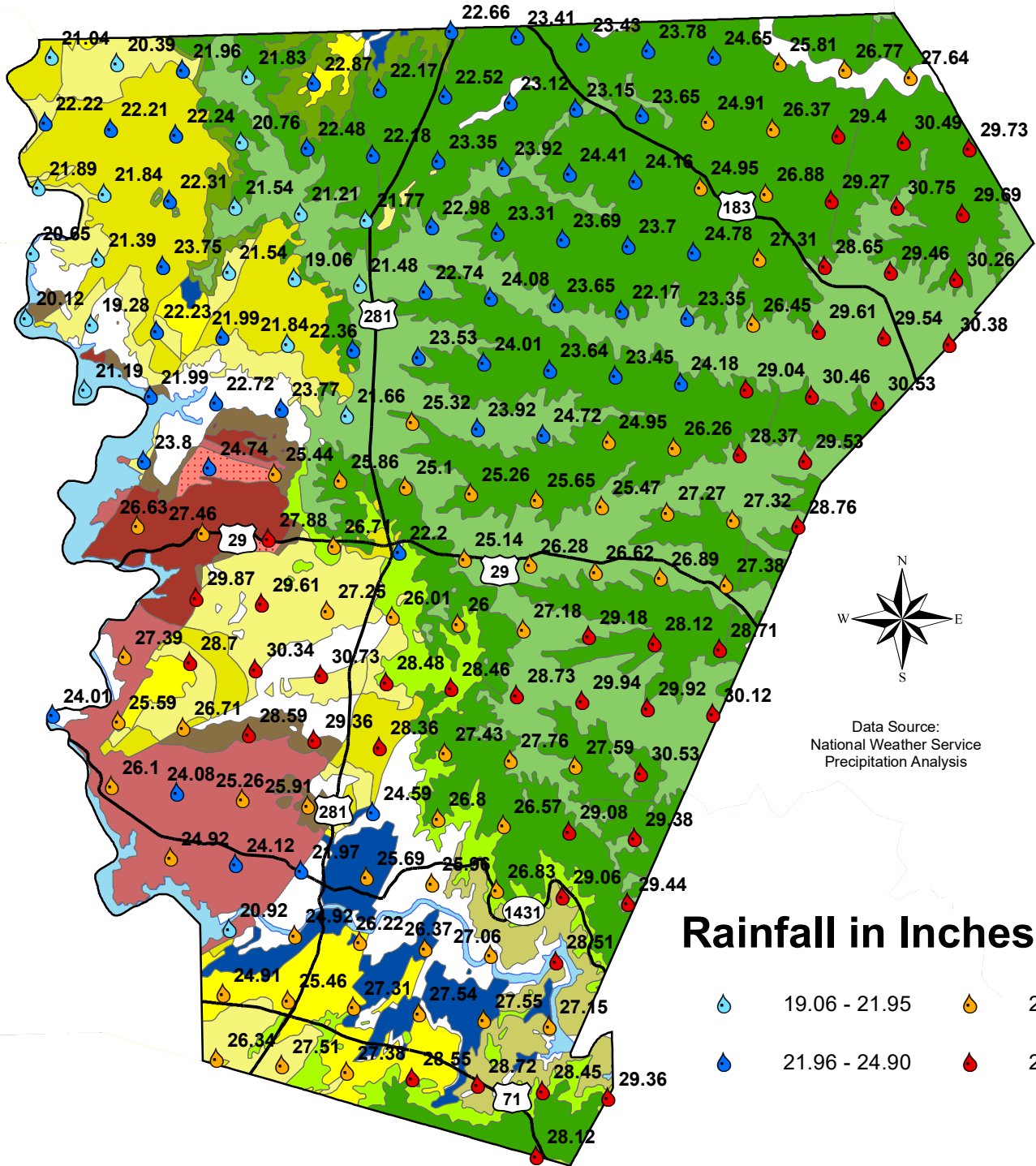




Burnet County Rainfall Totals January through September 2015



Data Source:
National Weather Service
Precipitation Analysis

Rainfall in Inches

- 19.06 - 21.95
- 21.96 - 24.90
- 24.91 - 27.85
- 27.86 - 30.75

- | | | |
|---|--|-------------------------------------|
| Kwa, Walnut Clay | Ellenburger-San Saba Aquifer | Granite & Granite Gravel Formations |
| Kgr, Glen Rose Limestone | Og, Gorman Formation | pCm, Mafic igneous rocks |
| Kpgr, Paluxy Sand and Glen Rose Limestone, undivided | Oh, Honeycut Formation | pCp, Packsaddle Schist |
| Kh, Hensell Sand | Ot, Tanyard Formation | pCt, Town Mountain Granite |
| Ktp, Travis Peak Formation | Cs, San Saba Member | pCv, Valley Spring Gneiss |
| Kcs, Cow Creek Ls., Hammett Shale, and Sycamore Sand, undivided | Hickory Aquifer | pCy, Younger granitic intrusion |
| Marble Falls Aquifer | Ch, Hickory Sandstone Member | Surface Water |
| IPmf, Marble Falls Limestone | Clc, Riley Formation, undivided | Water |
| | Cpw, Point Peak, Morgan Creek Ls., and Welge Ss. Mbs | |