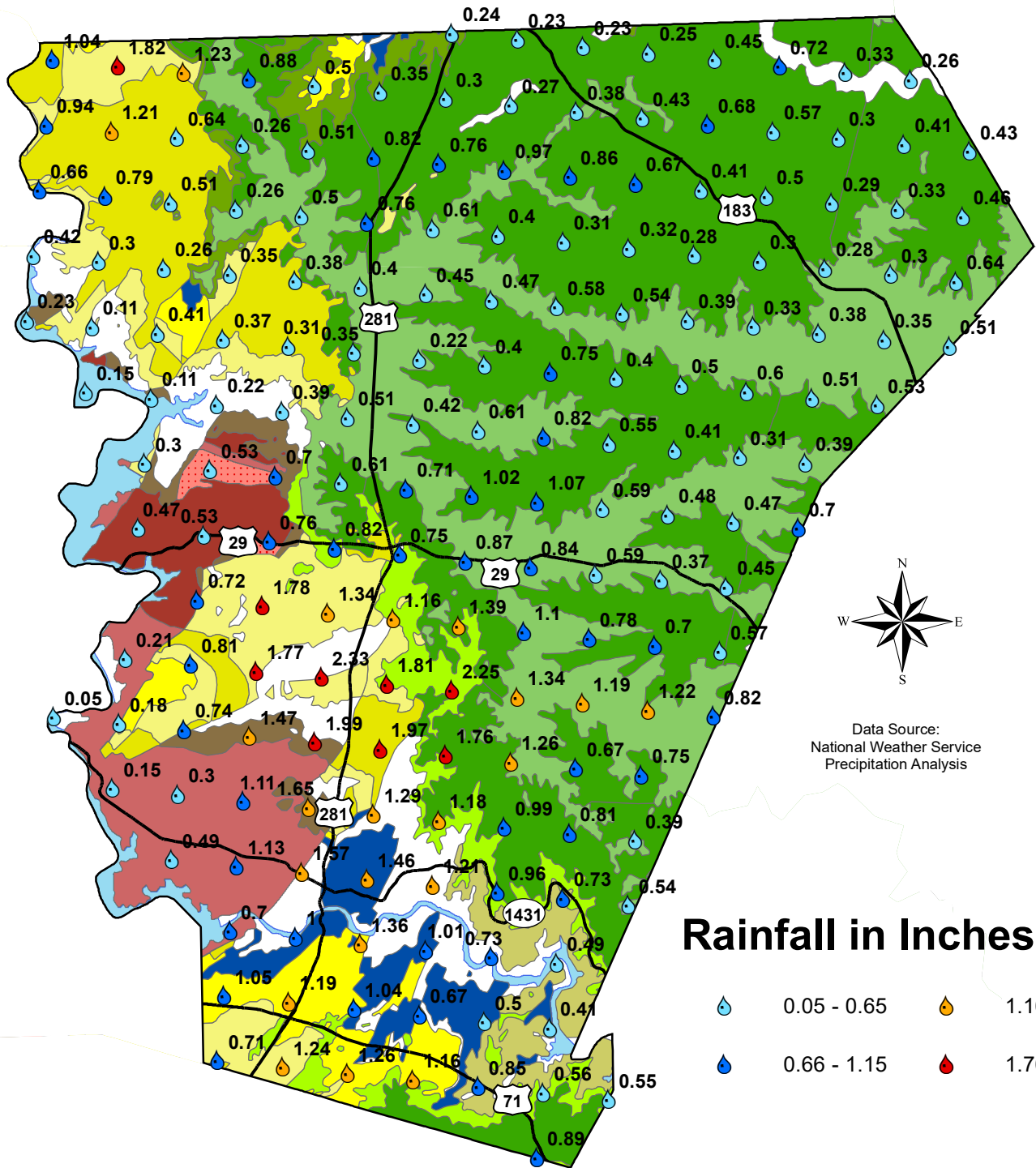




Burnet County Rainfall Totals September 2015



Data Source:
National Weather Service
Precipitation Analysis

- Kwa, Walnut Clay
- Kgr, Glen Rose Limestone
- Kpgr, Paluxy Sand and Glen Rose Limestone, undivided
- Kh, Hensell Sand
- Ktp, Travis Peak Formation
- Kcs, Cow Creek Ls., Hammett Shale, and Sycamore Sand, undivided
- Marble Falls Aquifer**
- IPmf, Marble Falls Limestone

- Ellenburger-San Saba Aquifer**
- Og, Gorman Formation
- Oh, Honeycut Formation
- Ot, Tanyard Formation
- Cs, San Saba Member
- Hickory Aquifer**
- Ch, Hickory Sandstone Member
- Clc, Riley Formation, undivided
- Cpw, Point Peak, Morgan Creek Ls., and Welge Ss. Mbs

- Granite & Granite Gravel Formations**
- pCm, Mafic igneous rocks
- pCp, Packsaddle Schist
- pCT, Town Mountain Granite
- pCv, Valley Spring Gneiss
- pCy, Younger granitic intrusion
- Surface Water**
- Water